

# FAZA S.r.l

## Macchine agricole

Via G. Antonucci 19 – Zona Industriale Regnano – 06012 Città di Castello (PG) Italy

Tel. +39-075/8511366 Fax. +39-075/8511367

[info@fazasrl.com](mailto:info@fazasrl.com) - [www.fazasrl.com](http://www.fazasrl.com)

## OPERATOR'S MANUAL

# CTH CADDY RAKE



**Pls, read carefully this manual before effecting any operation-  
Should this machine be resold, please hand over this manual to  
new proprietor**

## **INTRODUCTION**

The purpose of this manual is to inform of the use and maintenance of CTH Caddy rake. The machine has been designed to be used in all working conditions, consequently a good functionality depends on a correct use and on a proper maintenance.

### **WARNING !**

The operator must read and follow all instructions of this manual before any use of the machine.

The failure to comply with one or more of these instructions relieves the manufacturer of any responsibility for incidental damages to the machine, people or things.

Any warranty or complaint for a bad running of this machine will be taken into consideration by FAZA if would not be set the original spare parts.



### **IMPORTANT !**

The CTH Caddy rake is a “residual risk” machine because some moving parts of it can not be completely protected in order not to compromise its functionality.




## SAFETY DECALS

The equipment is fit with adhesives and plates with symbols on them. These “SAFETY SYMBOLS” assist the operator and others, helping to prevent accidents during operations, maintenance and storage.

The following symbols are used in this manual:

Symbol	Description
	Wear protection gloves
	Wear safety eye glasses

The following symbols are attached to the equipment:

Symbol	Description
	Consult the operator's and servicing manual
	Do not pass or stand in the vicinity of the equipment while in operation
	Danger for hands and/or feet

## **Security rules and prevention of accidents**

The staff assigned to use the CTH Caddy rake must be competent, in good physical condition, have good eye-sight and must be able to co-ordinate the different functions.

Moreover they must apply the established rules and act with due caution while carrying out his job so that he does not expose himself or other people to danger.

The operator must put the indication given in this manual into practice and must also enable third parties to assume their own responsibilities.

The operator must only start operations after he is absolutely certain the entire unit is functioning properly.

He must never neglect machine maintenance.

During the job, the operator must be able to control the machine and oversee the area where the machine is operating.

Never work unless the work area is adequately lit..

Never make any emergency repairs on the machine in order to start or finish a job.

Check that all instruction/warning labels and stickers are clearly visible and that the safety devices are in place and fully secured.

Never drink alcohol or take medicines before or while operating the machine or performing maintenance.

Always wear gloves and, if necessary, safety eye -glasses or goggles while performing maintenance.

Always check the nuts and bolts and ensure that they are fully tightened before starting work.

### **The operator must never leave the tractor driver's seat unless he has:**

- Lowered the machine to the ground
- Turned off the tractor
- Inserted the parking brake and put the vehicle in low gear
- Removed the key from the ignition

## Roadway circulation

The machine has been designed to operate on agricultural fields, but when it proves to drive on public roadways, always comply with all pertinent, current laws.

Before starting out on the roads, check:

- Longitudinal juts of the axles
- Side juts
- Efficiency of breaking device
- All lights and reflecting devices
- Any possible specifications or modifications of Highway Code

Should the operator think that the transport on the road is not complying with the a.m. specifications, he will have to provide to it by suitable means of transport

The operator must consider that the transport of the machine can have an influence upon the stability, the braking and the tractor wheels

Before joining any roads the operator will have to remove incidental ground from the wheels in order to avoid to dirty the feather edge and consequently avoid accidents

The transfer speed must be inferior to 15 Km/h

### **Important**

Never allow the tractor to be driven by minors, persons without a driver's license, inexperienced drivers or persons who are not in good physical or mental condition.

The operator is completely responsible for driving the tractor on the roadway and for operation of the attached machinery.

## **COUPLING TO THE TRACTOR**

This operation can be dangerous and so to prevent any accident, the operator and any possible assistants must strictly follow the below instruction

### **WARNING**

All the coupling operations must be performed on a level surface, with the engine off, the parking brake inserted, the shift set in a low gear. Moreover the operator and any assistants authorized by the operator must be present.

### **Preliminary coupling phases**

- Put the equipment with the shanks leaned on a level surface
- Verify that the category of 3rd point hitch and of the machine are of same type
- Check if the power and the weight of the tractor are suitable to the transport and the use of the equipment
- Link the hitches of the equipment to the respective lifting group arms of the tractor
- Insert the safety catches into the relevant holes
- Connect now the third point hitch, blocking it by means of the respective safety catches
- Fix the arms in order to avoid any swinging. Register them so that the machine will be parallel to the ground
- Check that at least the 20% of total weight rests on the front wheels, if not provide to ballast the front side of the tractor without exceeding the load capacity of the tyres

---

**WARNING**

All operations are very easy. In any way, it is very important to pay the maximum attention and care in order to avoid any possible risk of accident

## **INSTRUCTIONS FOR USE**

Considered already done any checking and tightening operations, pls see below the instructions for use:

Any time you are going to use the machine, check that nobody is in the safety area

Adjust the hydraulic loader so that the arms will freely follow the vertical and side swinging of the machine

As far as the stress controlled by the loader is concerned, pls refer to the rules in the manual of tractor

Concerning the speed, there is not any specific table. The operator himself will have to calculate it using the machine for some time.

At this point, after valuating the soil and if it has been already tilled, pls consider the following points:

Working depth

Groundspeed

Ground direction

## **MAINTENANCE**

Maintenance is very important and must be performed with great care. Good maintenance reduces operating costs and increases the equipment lifespan.

## **SERVICING**

In this part of the manual we examine the most frequent cases of servicing:

## **AFTER USE**

- clean the machine with water
- dry all the metal parts carefully
- lubricate all the moving parts
- check and tighten all bolts

## **PERIODIC**

- grease all bearings and all moving parts
- check all the metal parts which are subject to wear and, if necessary, replace them
- check and tighten all bolts and nuts
- check the metal parts which are under great strain during working conditions and if necessary replace them

## **REPLACEMENT SERVICING**

- wash the machine with water and sodium carbonate, taking care to dry the machine properly
- touch up the paint on metal parts if necessary
- change the oil and grease in the gear box after the first 30 working hours
- every subsequent 250 hours of work this operation has to be repeated
- protect the machine by covering it with a nylon or canvas cover stow, in a dry room and off the ground

## **DEMOLITION :**

When the operator feels the machine is to be taken out of service, remember to:

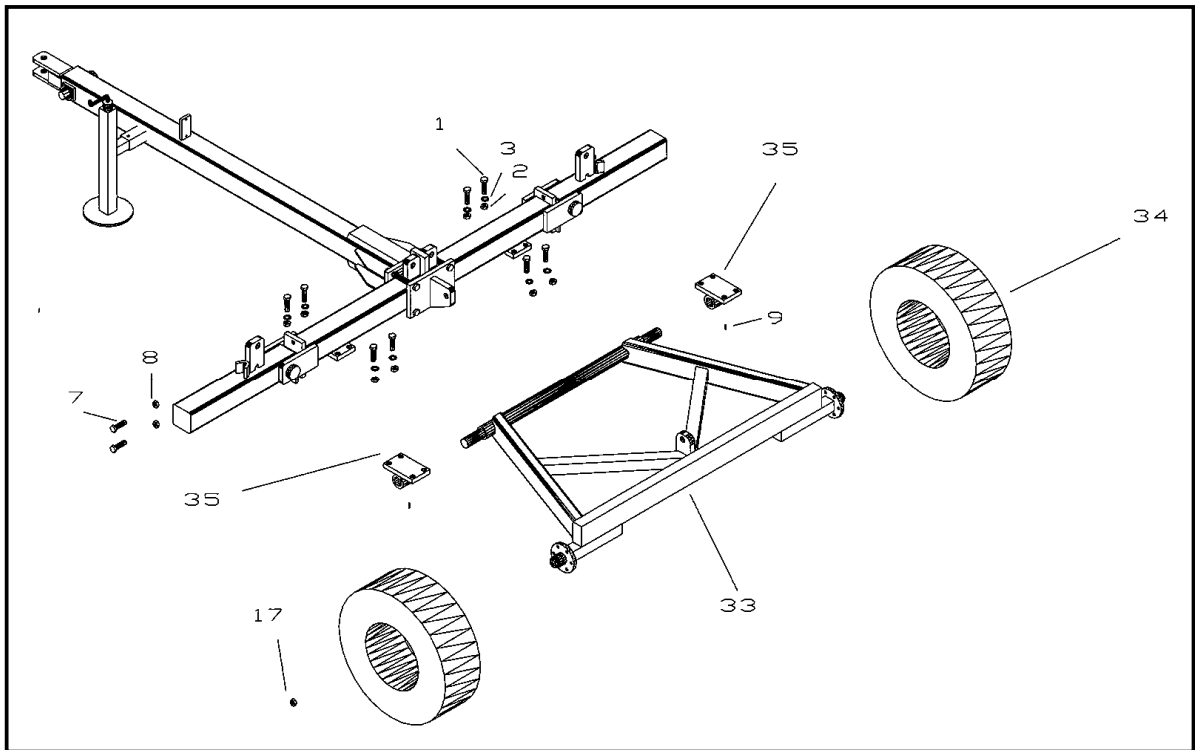
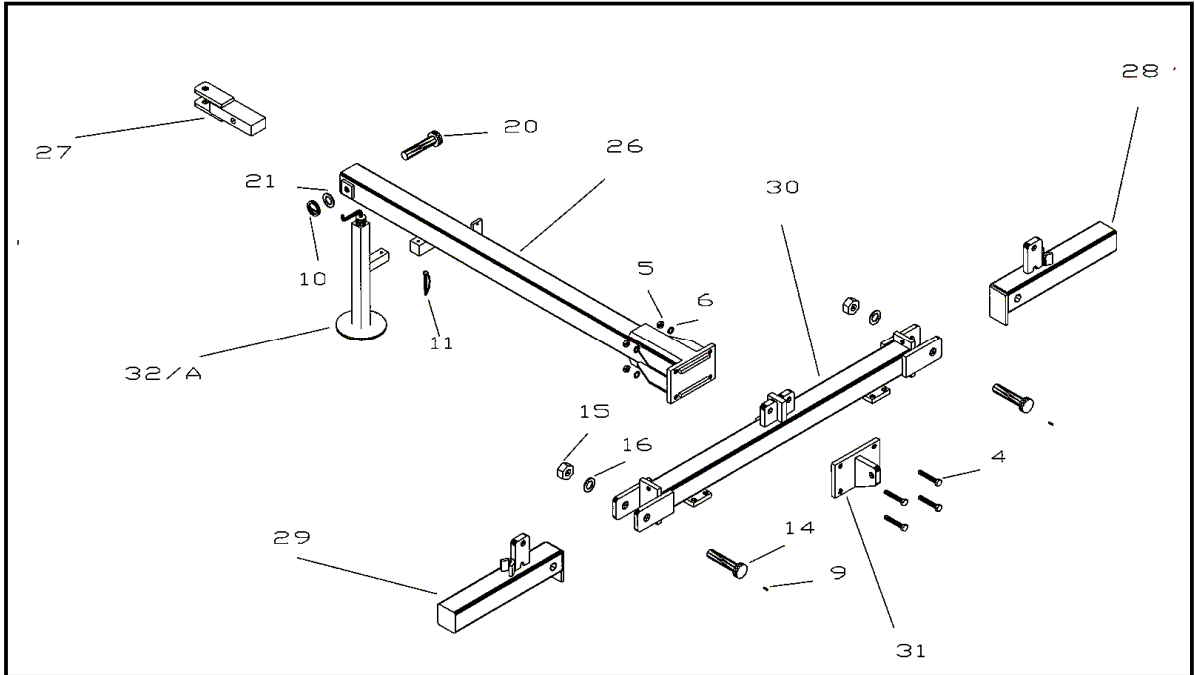
Wash the machine

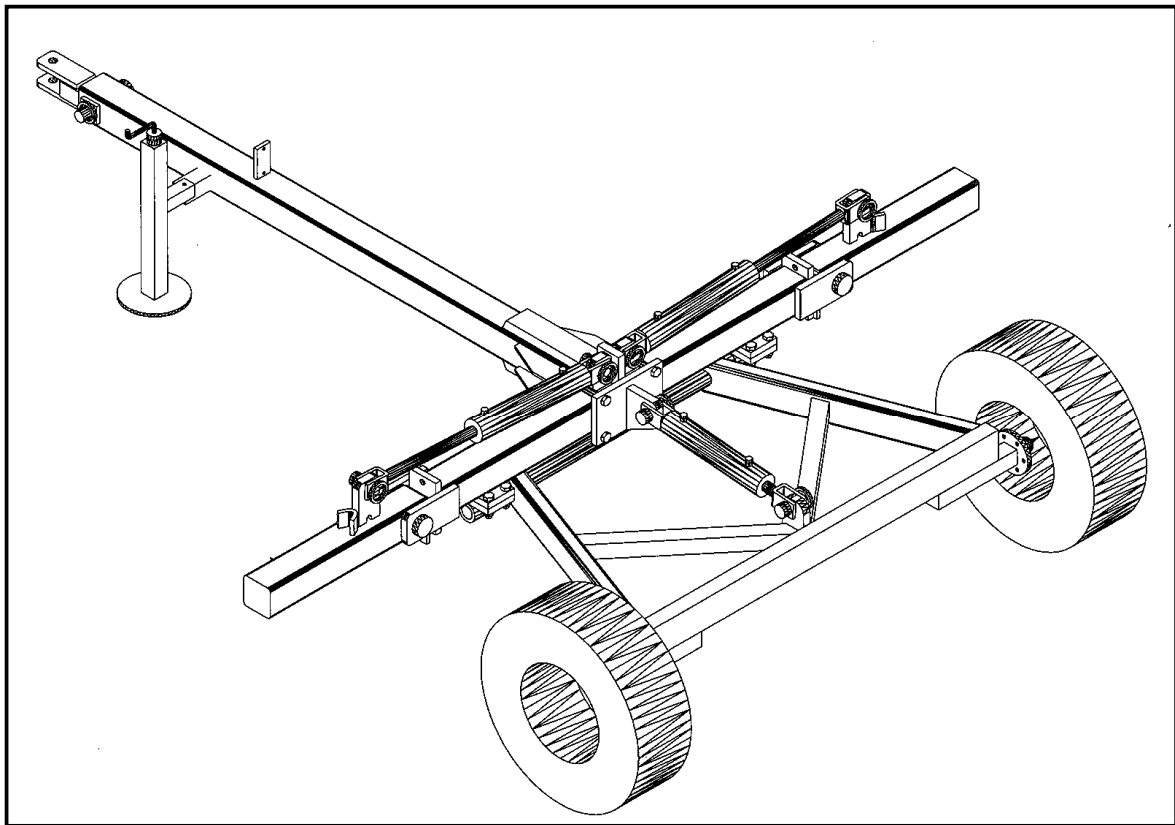
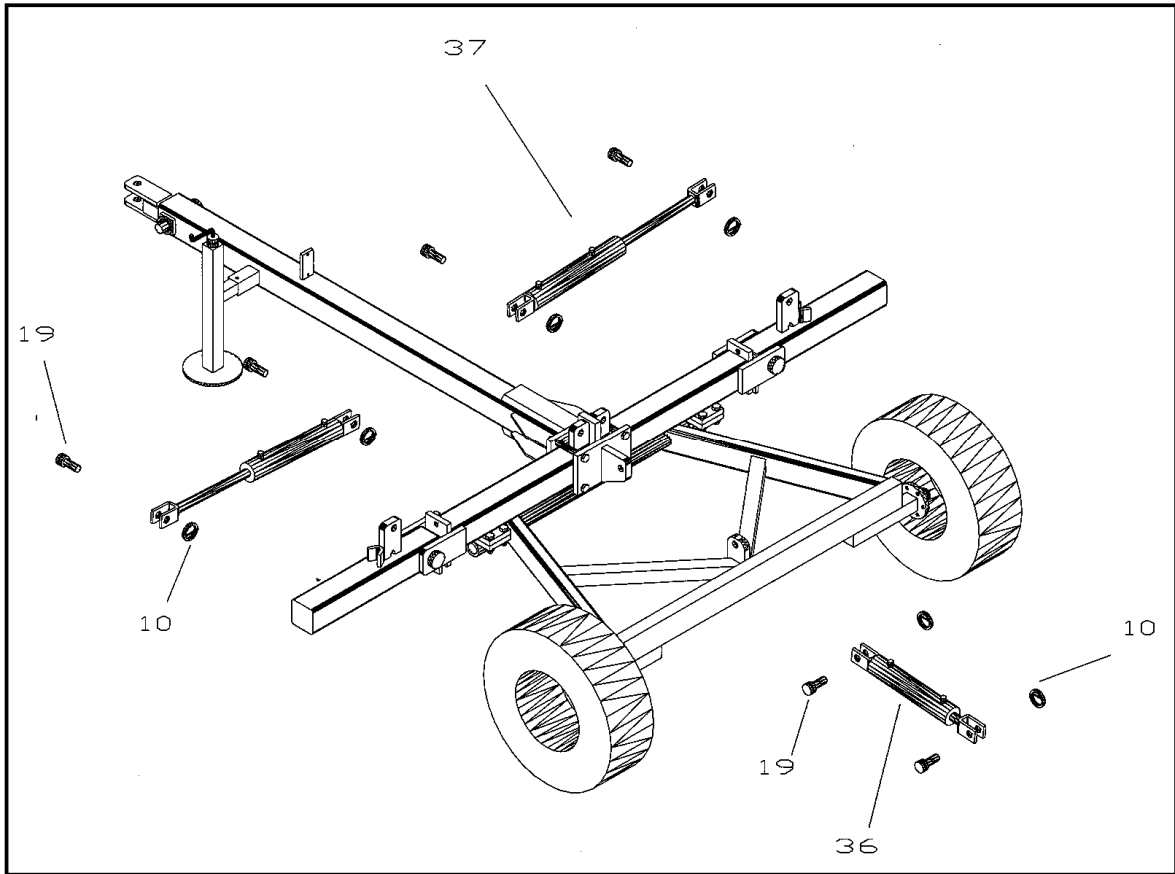
Remove the grease from the gearbox and empty it of oil

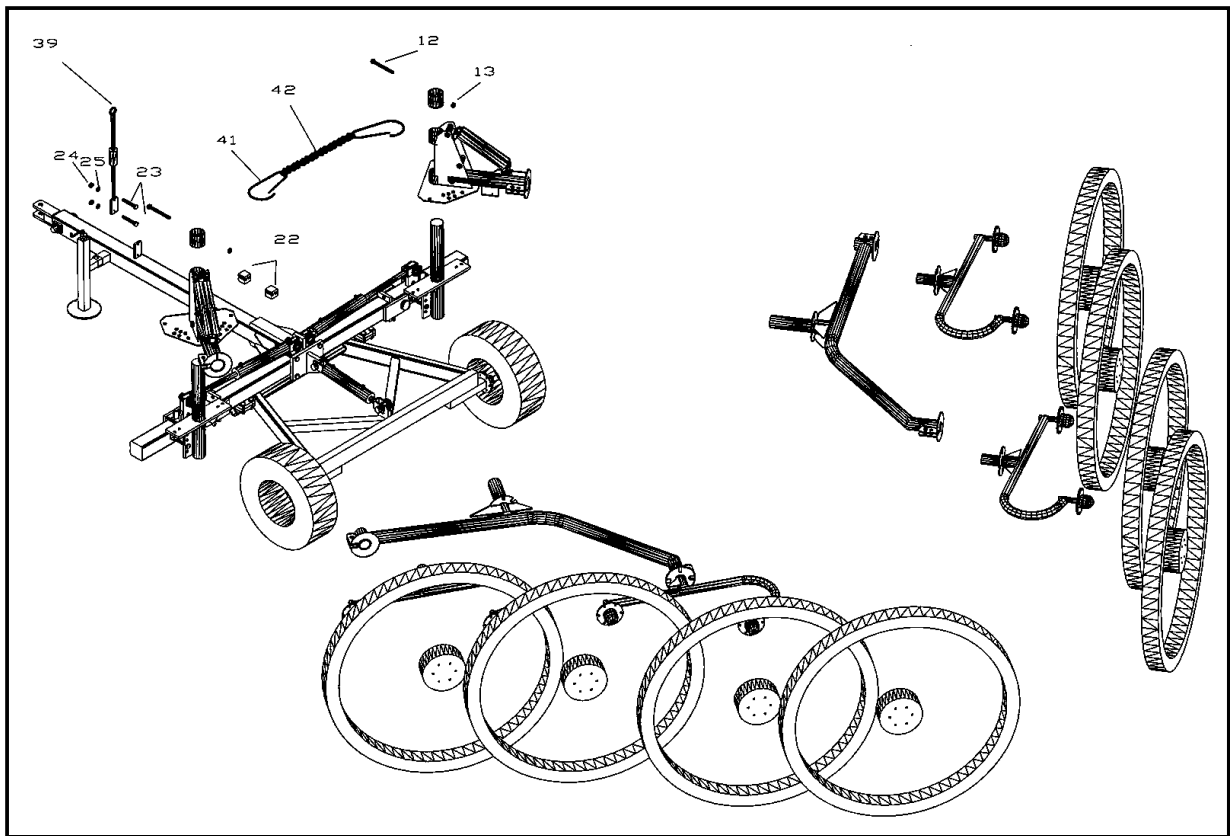
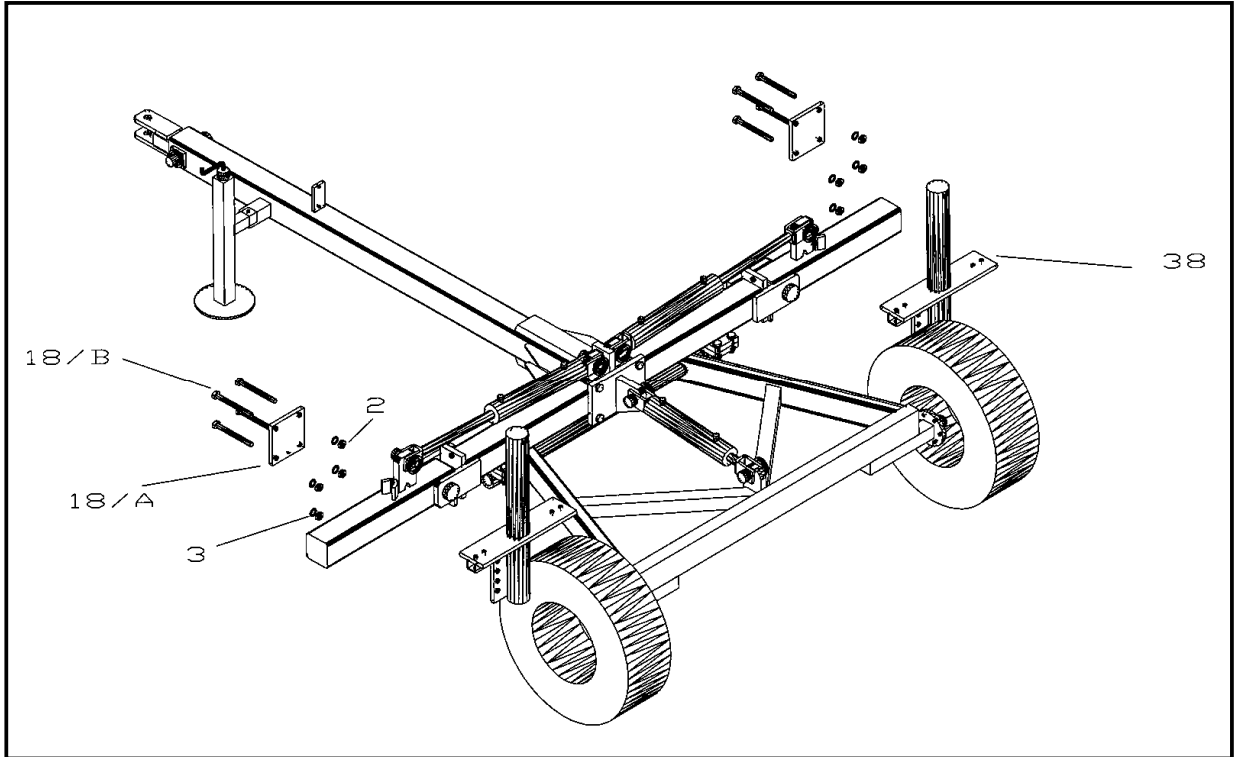
Deliver the machine to companies specialized in dismantling and recycling

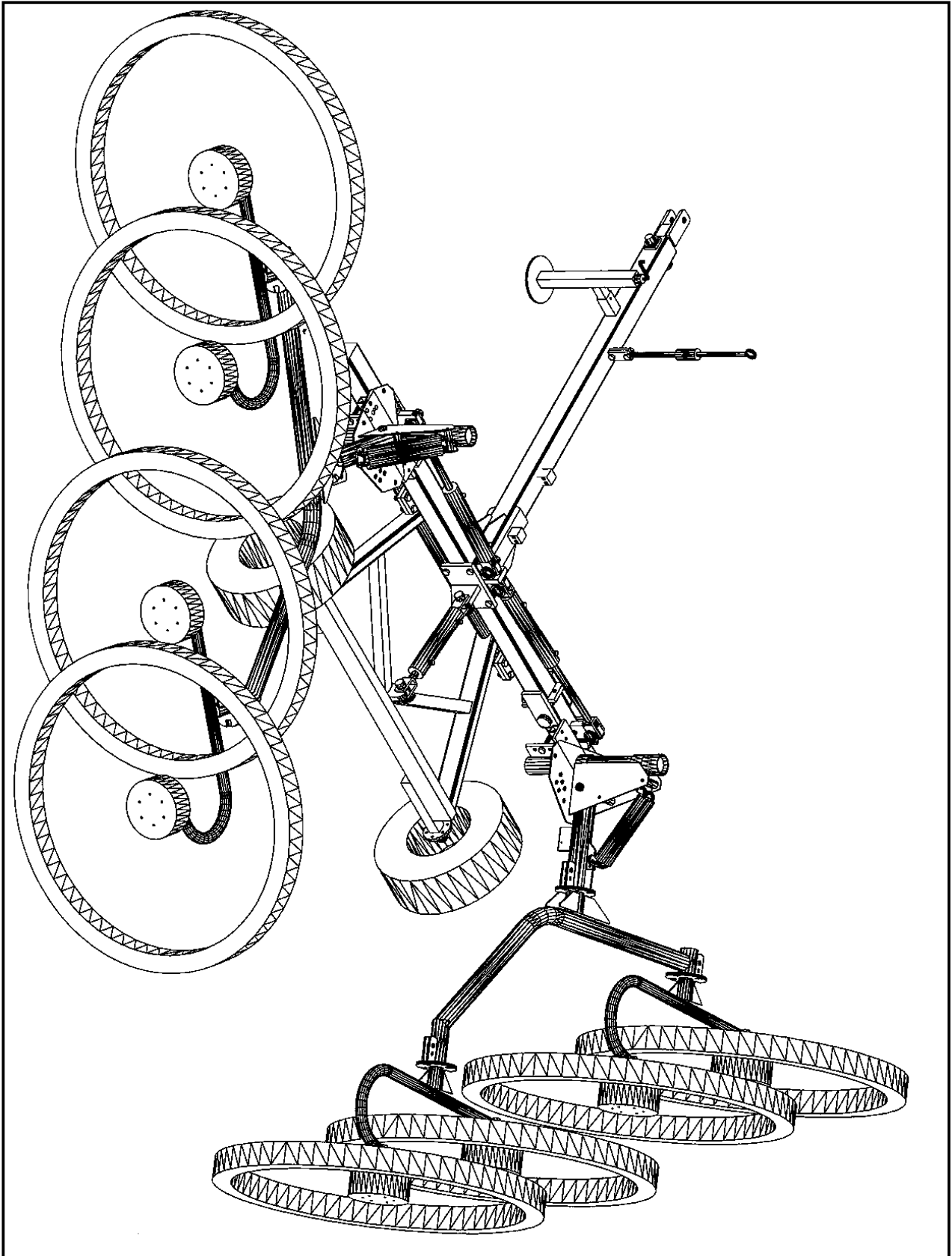


# SPARE PARTS LIST



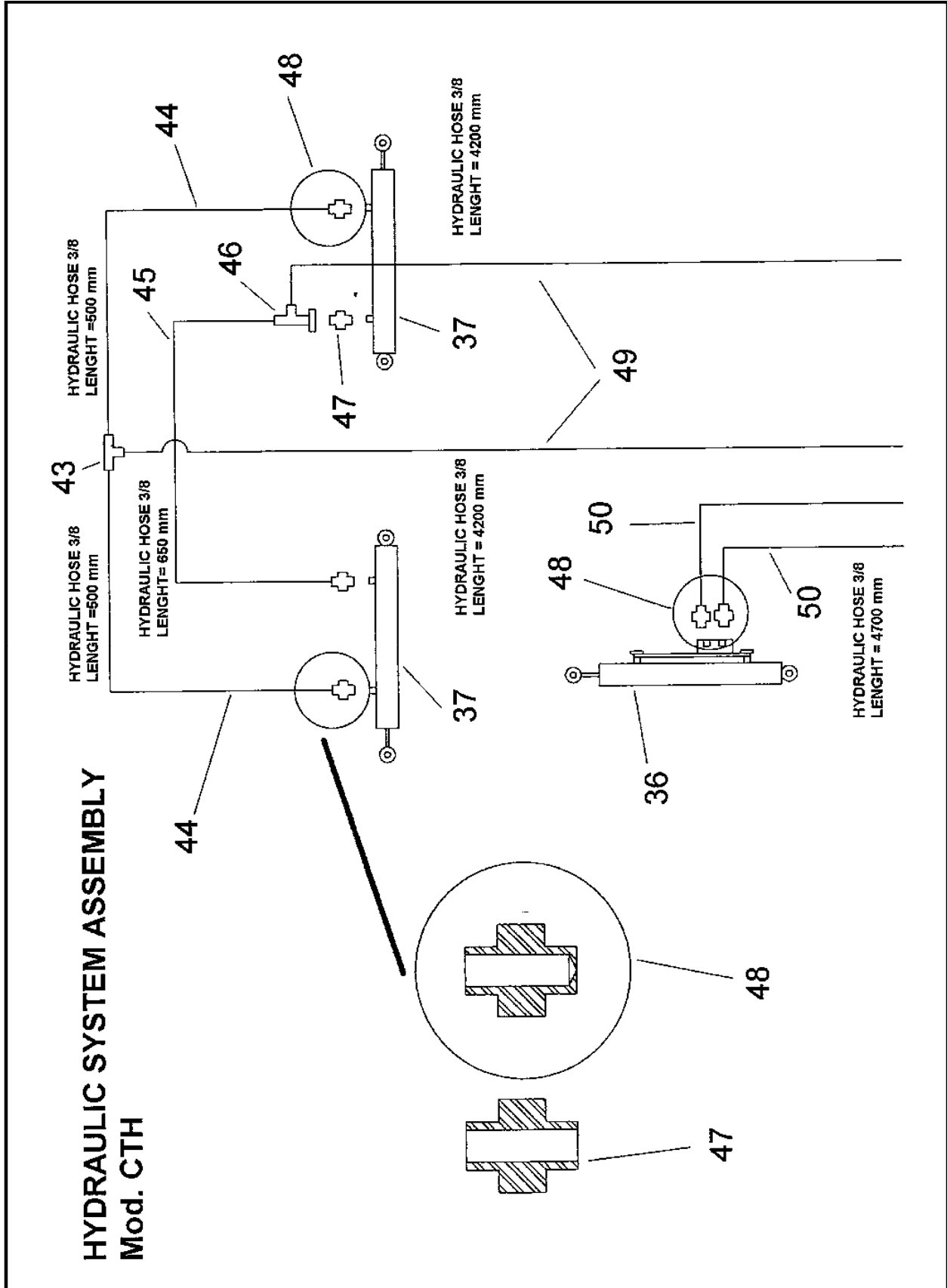






## HYDRAULIC SYSTEM ASSEMBLY

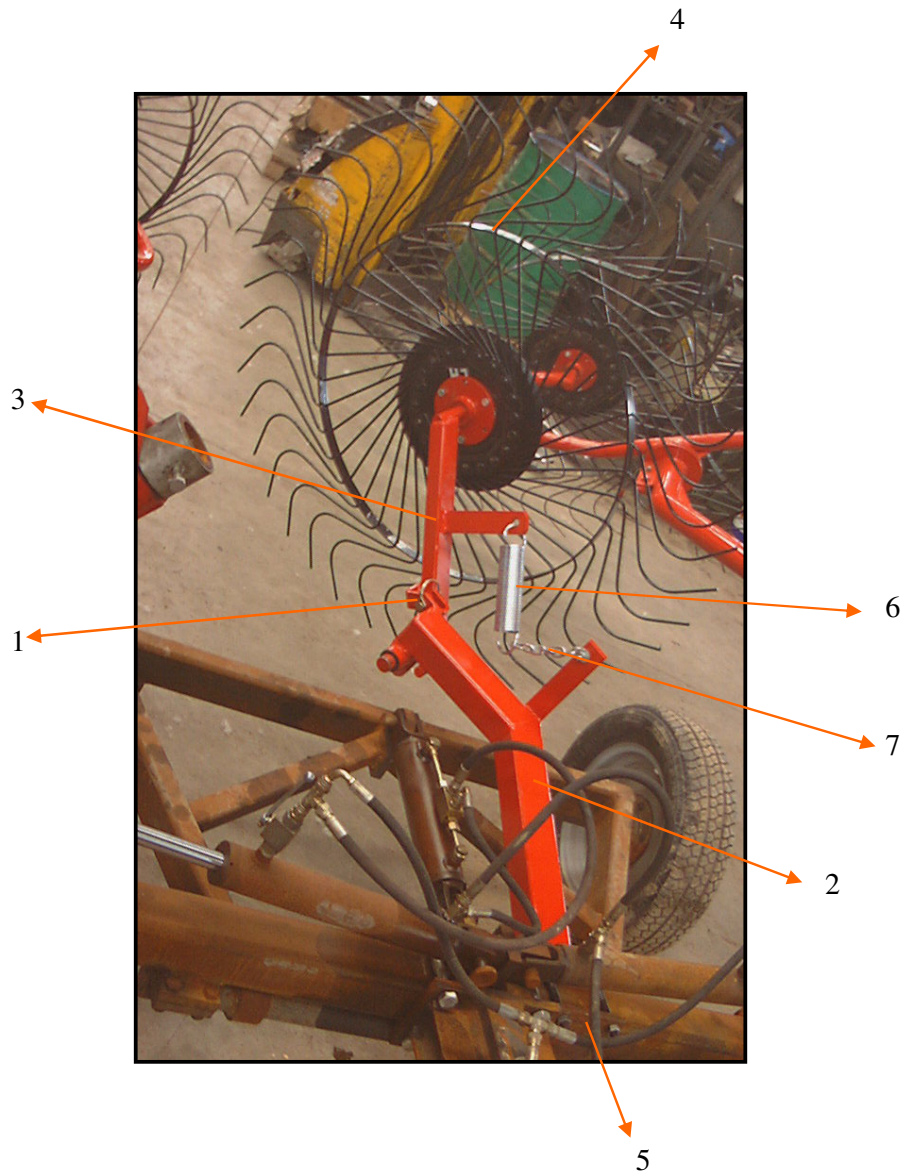




Pos.	Ref.	Qty	Description
1	CTH 1	No. 8	Galvanized Hex Screw 0,62x2,75 inches
2	CTH 2	No. 16	Self locking Nut 0,62 inches
3	CTH 3	No. 16	Galvanized Plate 0,62 inches
4	CTH 4	No. 4	Galvanized Hex Screw 0,78x6,69 inches
5	CTH 5	No. 4	Self locking Nut 0,78 inches
6	CTH 6	No. 4	Plate 0,78 inches
7	CTH 7	No. 4	Hex Screw 0,78x1,96 inches
8	CTH 8	No. 4	Nut 0,78 inches
9	CTH 9	No. 4	Greaser 0,31 inches
10	CTH 10	No. 7	Split Pin 0,23 inches
11	CTH 11	No. 1	Pin 0,39 inches
12	CTH 12	No. 2	Galvanized Hex Screw 0,47x4,33 inches
13	CTH 13	No. 2	Self locking Nut 0,47 inches
14	CTH 14	No. 2	Galvanized Arms pins 1,18 inches
15	CTH 15	No. 2	Self locking Nut 1,18 inches
16	CTH 16	No. 2	Plate 1,18 inches
17	CTH 17	No. 10	Wheel hub Nut 0,62 inches
18/A	CTH 18/A	No. 2	Plate
18/B	CTH 18/B	No. 8	Hex Screw 0,62 x 6,29 inches
19	CTH 19	No. 6	Galvanized Short Nut 0,98 inches
20	CTH 20	No. 1	Galvanized Long Nut 0,98 inches
21	CTH 21	No. 1	Galvanized Plate 1,02 inches
22	CTH 22	No. 2	Hoses Holder
23	CTH 23	No. 2	Hex Screw 0,47 x 1,57 inches
24	CTH 24	No. 2	Galvanized Nut 0,47 inches
25	CTH 25	No. 2	Galvanized Plate 0,47 inches
26	CTH 26	No. 1	Drawbar
27	CTH 27	No.1	Drawbar hook
28	CTH 28	No. 1	R.h. Arm
29	CTH 29	No. 1	L.h. Arm
30	CTH 30	No. 1	Central Frame
31	CTH 31	No. 1	Jack hitch
32/A	CTH 32/A	No. 1	Standing
33	CTH 33	No.1	Wheel frame
34	CTH 34	No. 2	Wheels
35	CTH 35	No. 1	Plate c/w r.h. - l.h. bushing
36	CTH 36	No. 2	Caddy lifting cylinder
37	CTH 37	No. 2	Arms lifting cylinder
38	CTH 38	No. 2	Cross
39	CTH 39	No. 1	Hoses holder
41	CTH 41	No.2	Chain Spring - Catch
42	CTH 42	No. 1	Chain
43	CTH 43	No. 1	"T" male Adptor
44	CTH 44	No. 2	Hydraulic Hose 3/8 Lenght: 19,68 inches
45	CTH 45	No. 1	Hydraulic Hose 3/8 Lenght:25,59 inches
46	CTH 46	No. 1	Male - Male - Female Revolving "T" Adaptor
47	CTH 47	No. 2	Nipple
48	CTH 48	No. 4	Calibrated Nipple
49	CTH 49	No. 2	Hydraulic Hose 3/8 Lenght: 165,36 inches
50	CTH 50	No. 2	Hydraulic Hose 3/8 Lenght: 185,04 inches

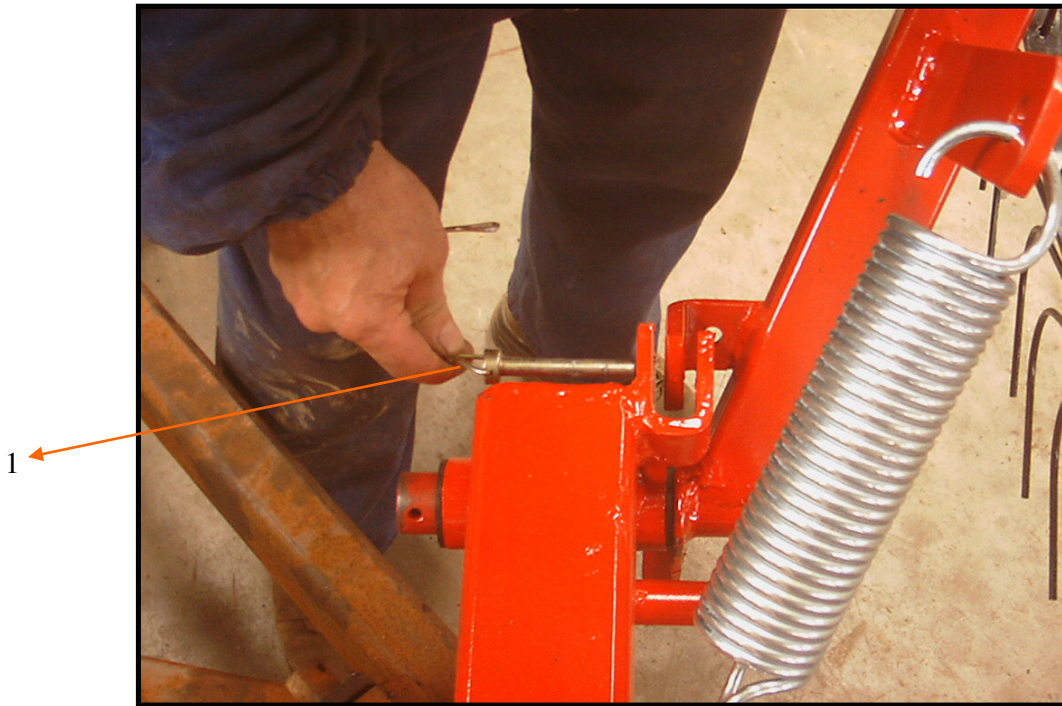
## SPLITTER WHEEL FOR CTH CADDY

Assemble the wheel arm (2) and the plate (5) to the CTH caddy frame on the right side (see the picture); assemble the small arm (3) and the PVC bushes to the wheel arm (2). Assemble the L.H. wheel (4), the spring (6) and the chain (7). Put the pivot not to use the splitter wheel (1).





Remove the pivot to use the splitter wheel ( 1 ) during the work.



Adjust the chain length (7) to lift the wheel or to lower it during the work, according to the caddy positions. This operation takes place automatically by acting only on the CTH caddy lifting cylinder.







