



FAZA *S.r.l.*

MACCHINE AGRICOLE

Via G. Antonucci, 19 - Zona Ind. Regnano - 06012 CITTÀ DI CASTELLO (PG) Italy
Tel. (075) 8511366 - FAX (075) 8511367
www.fazasrl.com - info@fazasrl.com

TRAILED DISC HARROW **Mod. FL**



OPERATOR MANUAL AND SPARE PARTS CATALOGUE

GENERAL DESCRIPTION

THE MACHINE IS MADE OF HIGH GRADE STEEL SUITABLE TO ANY WORKING CONDITION.

EACH DISC GANG SUPPORT IS FITTED WITH TWO HEAVY TAPER ROLLER BEARINGS AND TRIPLE LIPPED SEALS FOR EXTENDED LIFE. THE HOUSINGS ARE PROVIDED WITH GREASE NIPPLES TO GREASE THE BEARINGS.

LIFTING OF THE MACHINE IS BY MEANS OF HYDRAULIC RAMS CONNECTED TO THE TRACTOR HYDRAULIC SYSTEM.

THERE ARE SEVERAL ADJUSTMENTS ON THE MACHINE FOR PRECISE SETTING OF THE DISCS IN ANY FIELD CONDITION :

- A- HYDRAULIC GANG ANGLING THAT ALLOWS TO ADJUST THE MACHINE DURING THE WORKING PHASE.
- B- HORIZONTAL DRAWBAR ADJUSTMENT TO COMPENSATE THE SIDE DRAUGHT.
- C- HEIGHT DRAWBAR ADJUSTMENT FOR DIFFERENT TRACTOR DRAWBAR HEIGHT.
- D- WEIGHT TRANSFER ADJUSTMENT TO BALANCE THE WEIGHT ON THE FRONT AND REAR GANG.
- E- ADJUSTABLE SCRAPERS.

FITTING AND ADJUSTMENT ON THE DISC HARROW

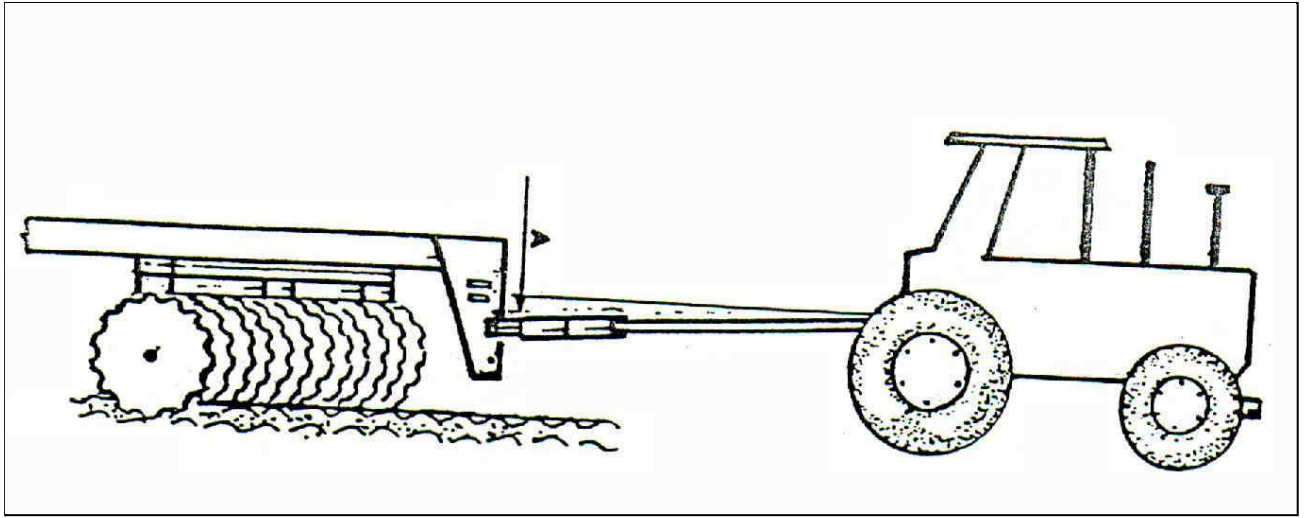
OUR MACHINES ARE SUPPLIED WITH THE FOLLOWING PARTS:

- FRAME
- GANGS
- DRAWBAR
- WHEELS
- HYDRAULICS

ATTACHING THE DISC HARROW TO THE TRACTOR

- ATTACH THE HARROW DRAWBAR TO THE TRACTOR DRAWBAR.
- ADJUST THE HEIGHT OF THE HARROW DRAWBAR BY POSITIONING IT AS SHOWN IN THE DIAGRAM BELOW.

A= 100 m/m



- ATTACH THE HYDRAULIC HOSES TO THE TRACTOR AVOIDING SHARP BENDS.
NOTE : ALWAYS REMEMBER TO FIT THE COPPER WASHERS PROVIDED.

HORIZONTAL ADJUSTMENT OF THE HARROW

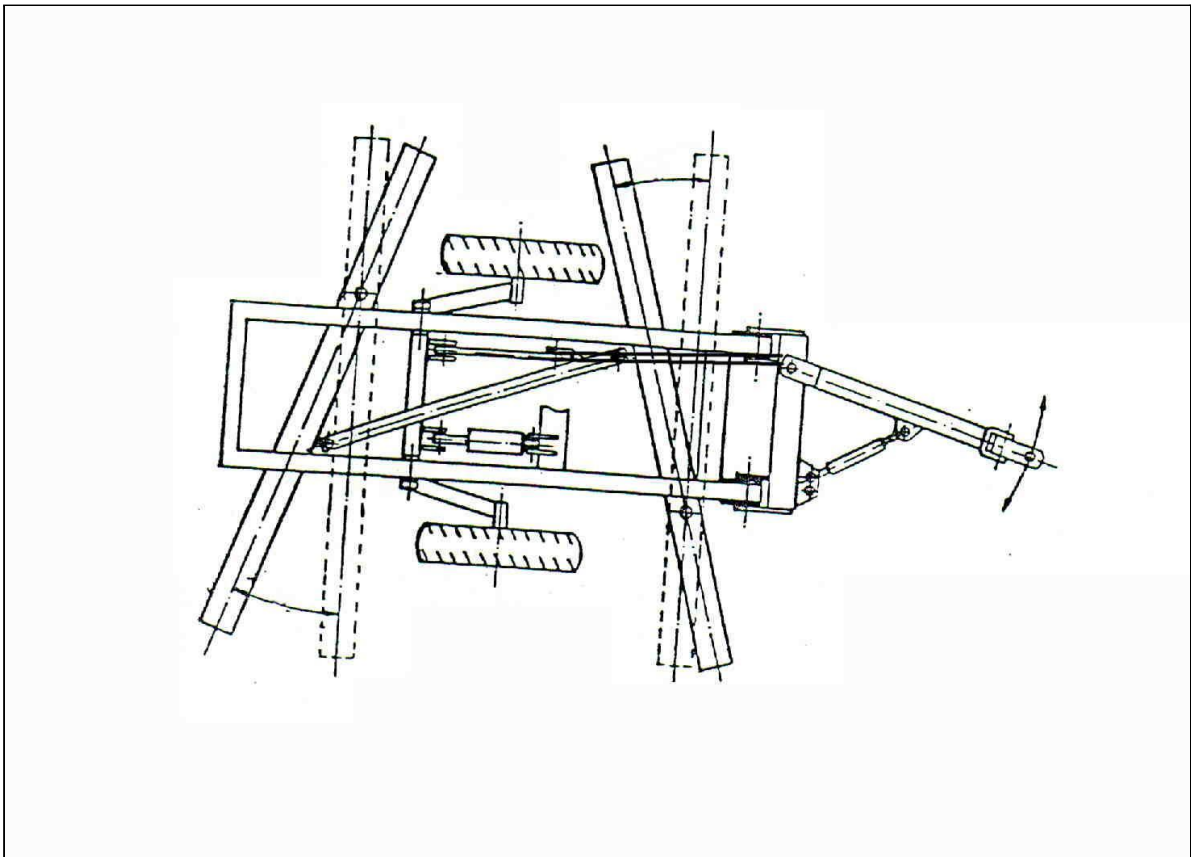
ADJUST THE POSITION OF THE MACHINE UNTIL THE FRAME IS HORIZONTAL, (BEEING SURE THAT THE HARROW IS LIFTED AND THE WHEELS ARE ON A FLAT GROUND) BY TURNING THE APPROPRIATE HANDLE AS SHOWN BELOW:

- TURN THE HANDLE CLOCKWISE TO LIFT THE REAR GANG.
TURN THE HANDLE ANTI CLOCKWISE TO LIFT THE FRONT GANG.



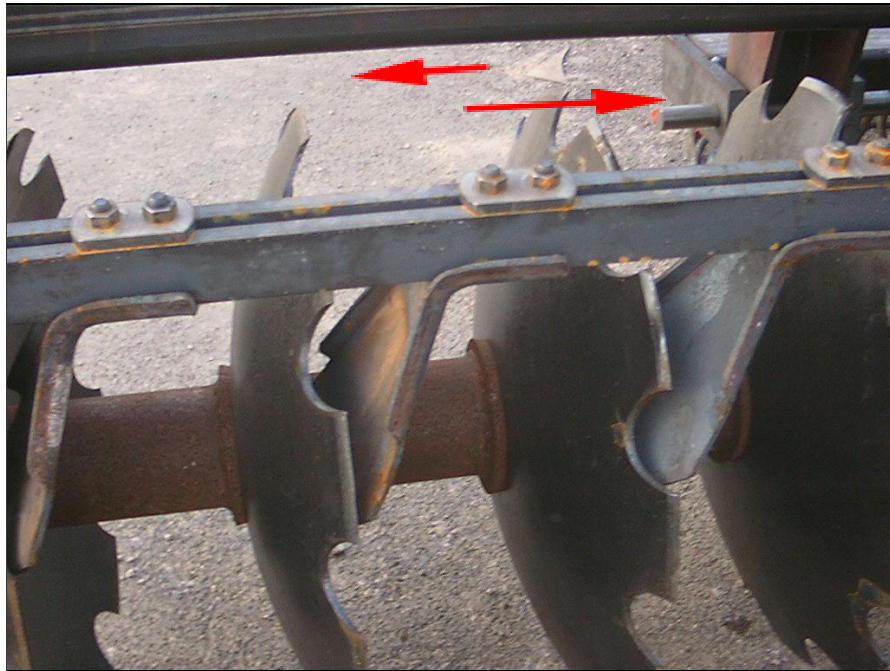
WORKING DEPTH ADJUSTMENT

THE DISC HARROW WORKING OPENING IS ADJUSTED BY THE HYDRAULIC CYLINDER AND THE WIDTH CAN VARY FROM 0° UP TO 25° , REDUCING THE GANGS ANGLE WE WILL GET LESS WORKING DEPTH.



SCRAPER ADJUSTMENT

TO MAKE SURE THAT THE SCRAPERS ALWAYS WORK WITH THEIR MAXIMUM EFFICIENCY, THEY HAVE TO BE ADJUSTED



MAINTENANCE

1)

DURING THE FIRST 20 HOURS , CHECK ALL NUTS AND BOLTS FOR TIGHTNESS WITH PARTICULAR ATTENTION TO THE DISC SHAFT NUT ILL. 8 / POS 11 WHICH SHOULD ALWAYS BE VERY TIGHT.

2)

A GENERAL CHECK SHOULD BE MADE BEFORE USE TO THE VARIOUS ADJUSTMENTS AS SPECIFIED IN THIS MANUAL.

3)

A GENERAL GREASING SHOULD BE DONE EVERY 40 HOURS. GREASING OF THE BEARINGS SHOULD BE DONE EVERY 8 HOURS.

4)

ALL PARTS SHOULD BE CHECKED REGULARLY FOR WEAR AND DAMAGE AND REPLACE AS NECESSARY.YOUR DEALER WILL BE ABLE TO SUPPLY YOU WITH ALL THE NECESSARY GENUINE PARTS.

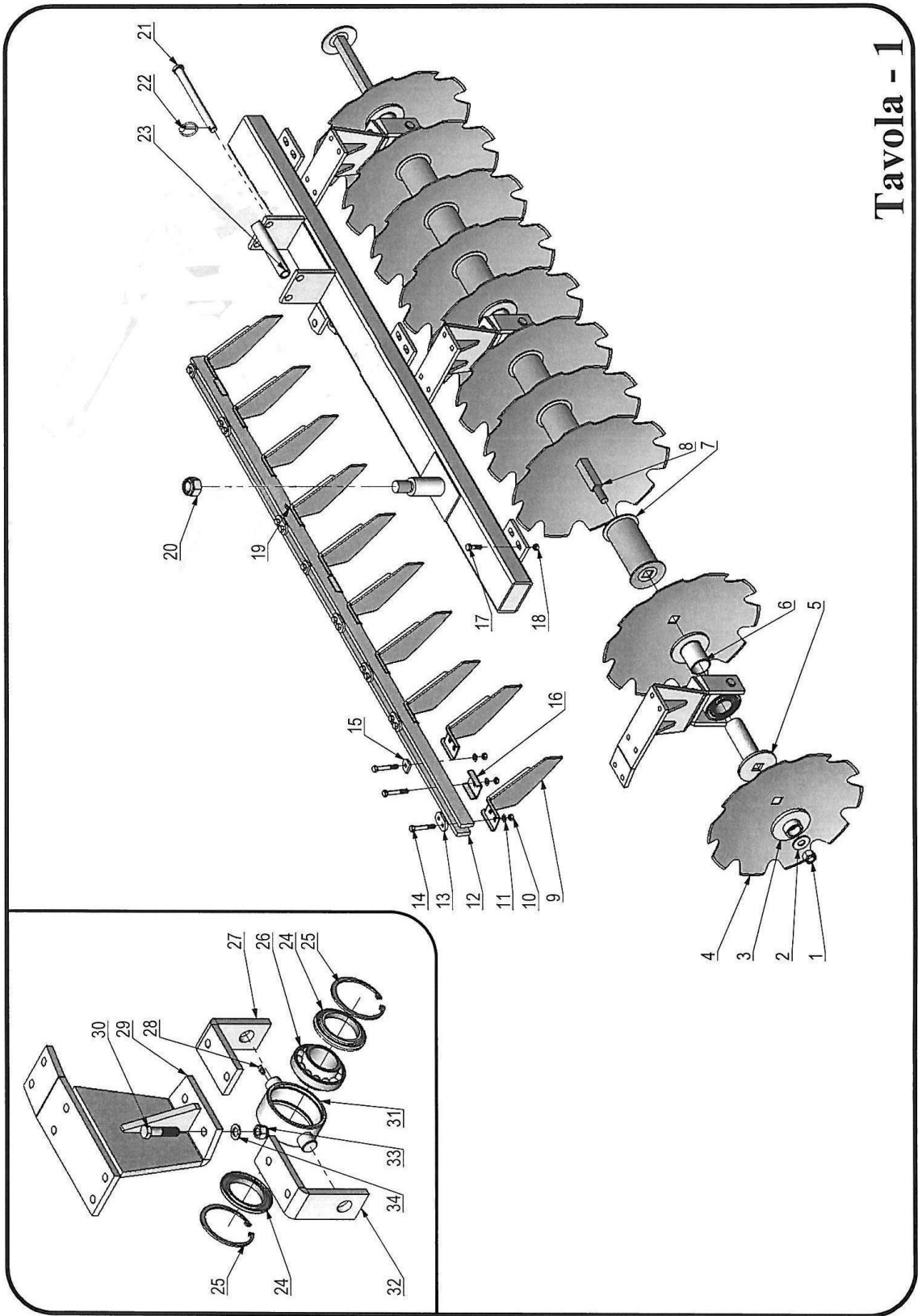


Tavola - 1

DISC HARROW FL	
TABLE	
1	FRONT GANG

POS.	DESCRIPTION	CODE		
1	Axle nut			
2	Washer			
3	Spacer plate			
4	Cut-way disc			
5	Long semi-spacer			
6	Short semi-spacer			
7	Spacer			
8	Axle			
9	Front gang scraper			
10	Nut			
11	Washer			
12	Scraper holder plate			
13	Scraper lock			
14	Screw			
15	Short scraper lock			
16	Bar lock			
17	Screw			
18	Nut			
19	Greaser			
20	Nut			
21	Gang guide pin			
22	Split pin			
23	Gang guide bushing			
24	Dust seal			
25	Seeger			
26	Bearing			
27	Bearing holder "L" shaped short plate			
28	Greaser			
29	Support holder plate			
30	Screw			
31	Bearing house			
32	Bearing holder "L" shaped long plate			
33	Nut			

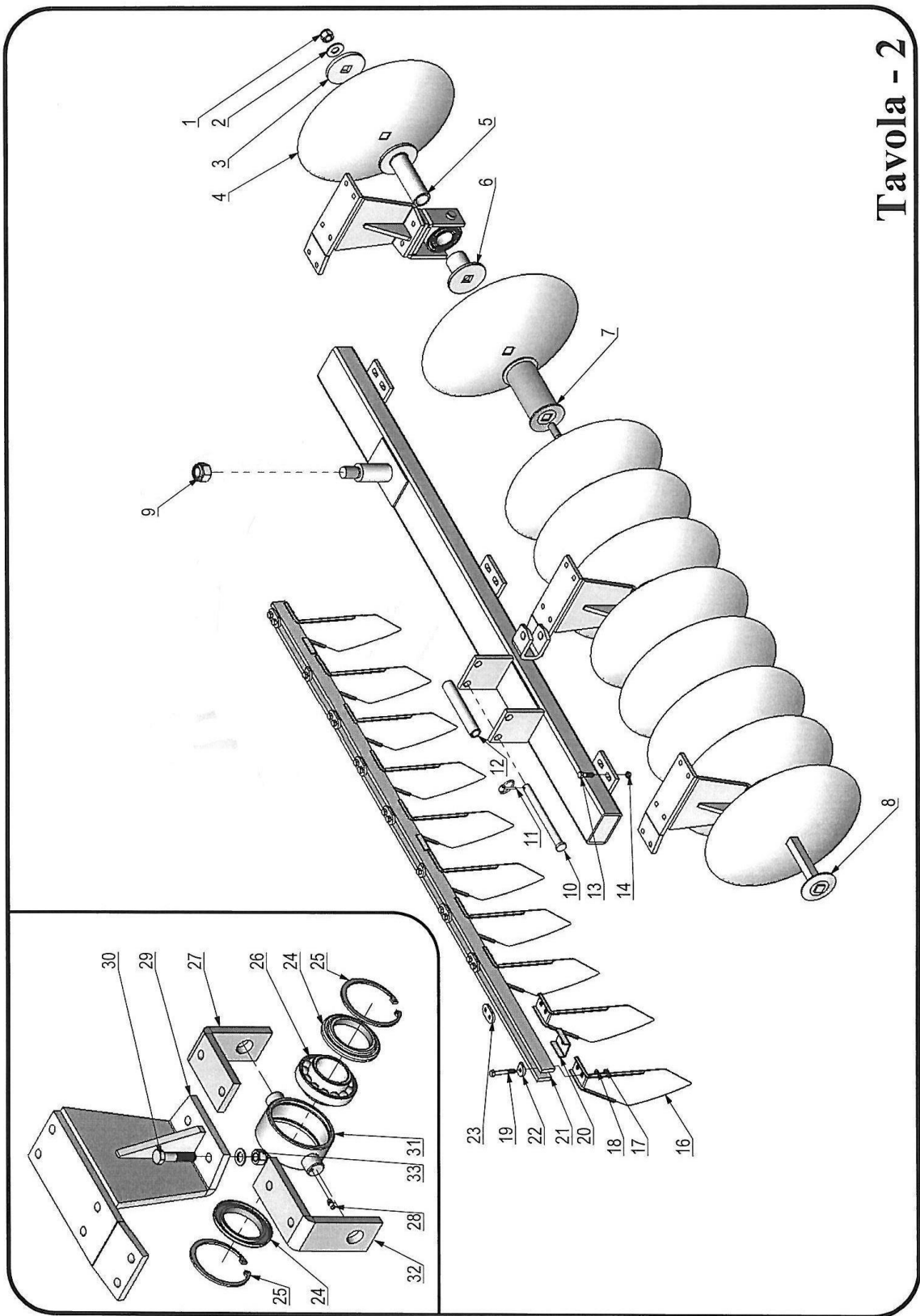


Tavola - 2

DISC HARROW FL	
TABLE	
2	REAR GANG

POS.	DESCRIPTION	CODE		
1	Axle nut			
2	Washer			
3	Spacer plate			
4	Plain disc			
5	Long semi-spacer			
6	Short semi-spacer			
7	Spacer			
8	Axle			
9	Nut			
10	Gang guide pin			
11	Split pin			
12	Gang guide bushing			
13	Screw			
14	Nut			
16	Rear gang scraper			
17	Nut			
18	Washer			
19	Screw			
20	Lock bar			
21	Scraper holder plate			
22	Short scraper lock			
23	Scraper lock			
24	Dust seal			
25	Seeger			
26	Bearing			
27	Bearing holder "L" shaped short plate			
28	Greaser			
29	Support holder plate			
30	Screw			
31	Bearing house			
32	Bearing holder "L" shaped long plate			
33	Nut			

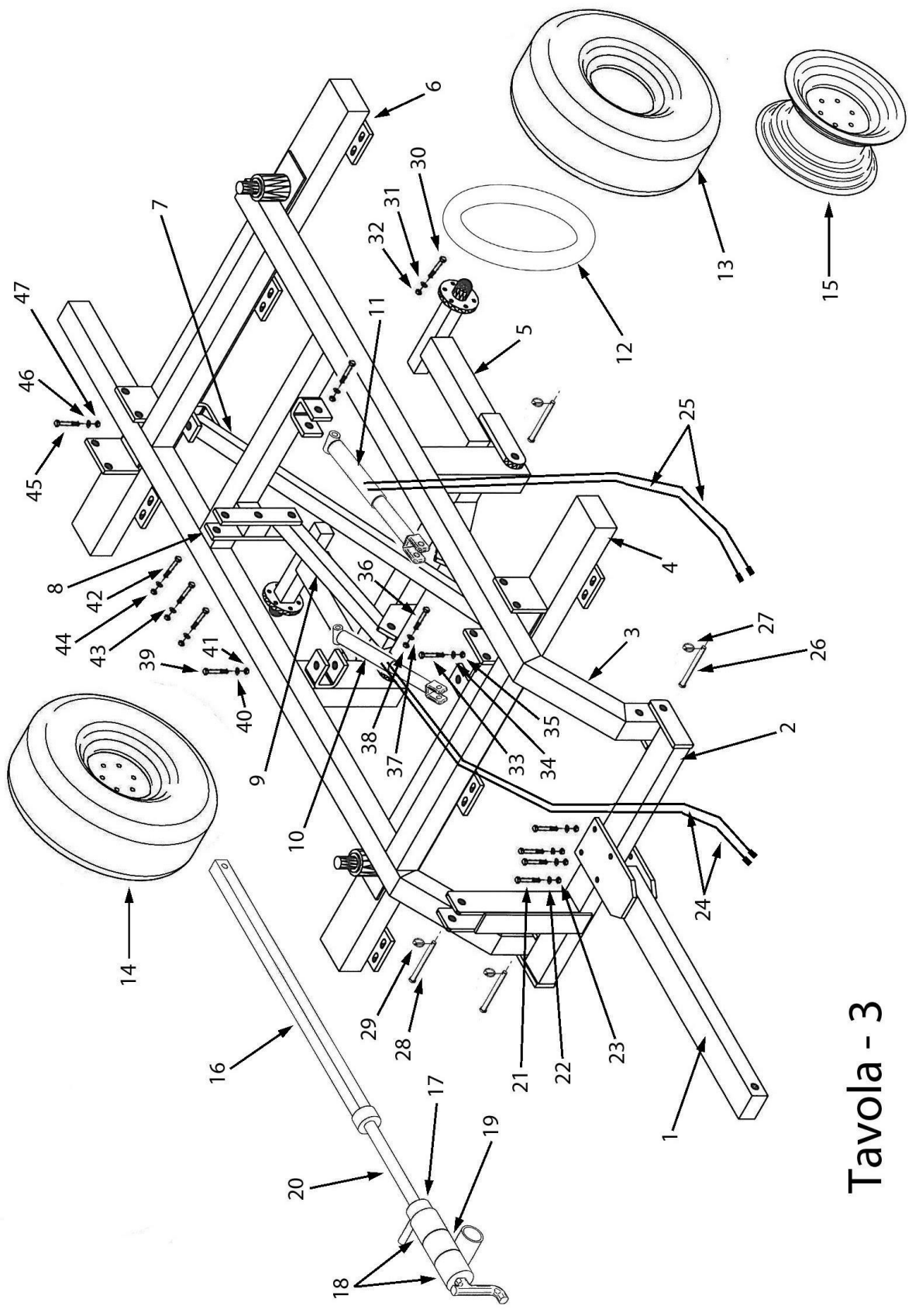


Tavola - 3

DISC HARROW FL	
TABLE	
3	FRAME

POS.	DESCRIPTION	CODE		
1	Beam			
2	Beam holder cross shaft			
3	Disc harrow frame			
4	Front gang holder bar			
5	Wheel axle			
6	Rear gang holder bar			
7	Long sprag			
8	Connecting rod plate			
9	Short sprag			
10	Gang opening jack			
11	Wheel lifting jack			
12	Air tube			
13	Tyre			
14	Complete wheel			
15	Rim			
16	Shock absorber staff			
17	Shock absorber staff screw			
18	Shock absorber spring			
19	Shock absorber cross			
20	Shock absorber threaded staff			
21	Screw			
22	Washer			
23	Nut			
24	Opening hydraulic pipes			
25	Pipes			
26	Pin			
27	Split pin			
28	Pin			
29	Split pin			
30	Wheel screw			
31	Washer			
32	Nut			
33	Screw			
34	Washer			
35	Nut			
36	Screw			
37	Washer			
38	Nut			

DISC HARROW FL	
TABLE	
3	FRAME

POS.	DESCRIPTION	CODE		
39	Screw			
40	Washer			
41	Nut			
42	Screw			
43	Washer			
44	Nut			
45	Screw			
46	Washer			
47	Nut			